



MALAYSIA DUMP TRUCK SYZ415C-8S(R)



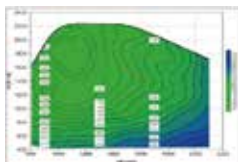
SANY HEAVY INDUSTRY CO., LTD.
OFFICIAL WEBSITE : www.sanygroup.com

MALAYSIA DUMP TRUCK SYZ415C-8S(R)



STRONG POWER AND FAST CLIMBING SPEED

Equipped with 435 horsepower Deuts engine, delivering Bigger power to achieve efficiency and lowering fuel consumption.



High transmission efficiency



Rough road

ROBUST AND DURABLE DESIGN

High reliability, 9T+16T front and rear axle ratio, matched with 8*8 frame; Longer working hours and reduced maintenance frequency , Cargo Box made with special high strength steel, satisfying the load capacity and reducing the weight of the entire vehicle, can be loaded more, run faster and efficiently cost saving.



Optional 360° view



Spray water resistance test

INTELLIGENT MANUFACTURING

Intelligent manufacturing, high-precision intelligent robot production line, manufacturing welding and assembly; Ensuring quality products delivery.



Intelligent manufacturing



Driving safety and comfortable

Type			SYZ415C-8S(R) Sany Deutz Engine (8×4)
			ZZX200000472
Vehicle Parameters	Dimension	Standard	11650×2600×3150 (length of cargo 8600)
	Wheel base mm	Standard	2000+5200+1400 (length of cargo8600)
	Curb Weight		17.5t
	Full Load Weight		55-60t
	Economic speed range		40-80
	Rated maximum speed (1900rpm)		90
	Permissible maximum speed (2200rpm)		110
Cargo Box	15m ³ (8600mm)	●	
L*2300*760	13m ³ (7600mm)	○	
Cargo Type	Rectangular	●	
	U-Type	○	
Cab	Model	318	
	Other configuration	Single sleeper, wrap around instrument table, air conditioner, radio (with Bluetooth, USB and SD card interface, can connect with mobile phone to make calls, play music), sun visor, 2kg fire extinguisher, three steps	
Chassis Parameters	Engine	Model	D12C5-435E1
		Brand	Sany Deutz Engine
		Displacement (L)	12.12 (Euro V)
		Rated power/speed (kW/rpm)	308/1900
		Maximum torque/speed	2106/1000-1400
		Idle speed (rpm)	600±50
		Net engine weight (kg)	1150
		Auxiliary braking	In-cylinder braking
		Add blue tank volume (L)	35
	Other	Direct injection, water cooling, four stroke, supercharged intercooling, high pressure common rail	
	Clutch		φ430
	Transmission		Fast 12JSDX240TA
	Front Axle		9T with ABS and Waterproof Axle
	Middle and Rear axle	Model	16T with ABS and Waterproof Axle
		Speed ratio	4.77
	Differential lock		Differential lock between wheels and shafts
	Tires and rims	Model	315/80 R22.5
	Frame	Frame(mm)	940-860×316×(8+8)
	Front suspension		8 pieces (width 90mm, thickness 18mm multi-piece spring + shock absorber)
	Rear suspension		12 pieces (width 90mm, thickness 25mm multi-spring + four-horse integrated balance
	Brake		Pneumatic double circuit drum brake, ABS
	Fuel tank		400L (Aluminum)
	Battery		165Ah
General configuration	Undertank protection		●
	Headlight and side light guard mesh		●
	Engine side baffle (body)		●
	Remove the crank type spare tire support		●
	Chassis toolbox		●
Recommend			Typical Scene: Urban Construction、Suburban Transfer Typical Road: Paved Road, Highway、Minimal Turning Radii Limitation Designed Gross Vehicle Weight: ≤60t Regular Speed: Full Load 50-80km/h (Highway) Empty Load: 60-90km/h (Heighway) Maximum Speed: Usually ≤110km/h
Note: X-without; ○-Optional; ●-Standard ; The above configuration parameters are for reference. The manufacturer reserves the right to change them without prior notice. The manufacturer reserves right for final interpretation			

Note: X-without; ○-Optional; •-Standard ; The above configuration parameters are for reference. The manufacturer reserves the right to change them without prior notice. The manufacturer reserves right for final interpretation.