



MALAYSIA DUMP TRUCK SYZ311C-8S



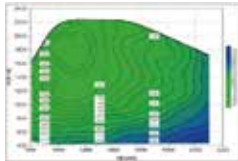
SANY HEAVY INDUSTRY CO., LTD.
OFFICIAL WEBSITE : www.sanygroup.com

MALAYSIA DUMP TRUCK SYZ311C-8S



STRONG POWER AND FAST CLIMBING SPEED

Equipped with 435 horsepower Deuts engine, delivering Bigger power to achieve efficiency and lowering fuel consumption.



High transmission efficiency



Rough road

ROBUST AND DURABLE DESIGN

High reliability, 9T+16T front and rear axle ratio, matched with 8+8 frame; Longer working hours and reduced maintenance frequency, Cargo Box made with special high strength steel, satisfying the load capacity and reducing the weight of the entire vehicle, can be loaded more, run faster and efficiently cost saving.



Optional 360° view



Spray water resistance test

INTELLIGENT MANUFACTURING

Intelligent manufacturing, high-precision intelligent robot production line, manufacturing welding and assembly; Ensuring quality products delivery.



Intelligent manufacturing



Driving safety and comfortable

Type			SYZ311C-8S Sany Deutz Engine
			ZZX200000475
Vehicle parameters	Dimension (LxWxH)mm		9000×2600×3150
	Wheel base mm		4600+1400
	Curb Weight		14.5t
	Full Load Weight		50-55t
	Economic speed range		40-80
	Rated maximum speed (1900rpm)		90
	Permissible maximum speed (2200rpm)		110
Cargo Box 6000*2300*760	11m ³ (6000mm)		●
	Rectangular		●
	U-Type		○
Cabin	Model		318 Lengthened flat roof
	Other configuration		Single sleeper, wrap around instrument table,air conditioner, radio (with Bluetooth, USB and SD card interface, can connect with mobile phone to make calls, play music), sun visor, 2kg fire extinguisher, three steps
Chassis Parameter	Engine	Model	D12C5-435E1
		Brand	Sany Deutz Engine
		Displacement (L)	12.12 Euro V
		Rated power/speed (kW/rpm)	308/1900
		Maximum torque/speed (N.m/rpm)	2106/1000-1400
		Net engine weight (kg)	1150
		Auxiliary braking	In-cylinder braking
		Add blue tank volume (L)	35
	Other	Direct injection, water cooling, four stroke, supercharged intercooling, high pressure common rail	
	Clutch		φ430
	Transmission		Fast 12JSDX240TA (12.1-0.78)
	Front axle		9T with ABS and waterproof axle1
	Medium axle	Model	6T with ABS and waterproof axle
		Speed ratio	4.77
		Differential lock	Differential lock between wheels and shafts
	Tires and rims		315/80 R22.5
	Frame		940-860×316×(8+8)
	Front suspension		10 leafs (width 80mm、thickness 18mm multiple-leaf spring)
	Rear suspension		12 leafs (width 90mm、thickness 25mm multiple-leaf spring+Four horse integrated balance shaft)
	Brake		Pneumatic double circuit drum brake, ABS
Fuel tank		400L (Aluminum)	
Battery		165Ah	
General configuration	Undertank protection		●
	Headlight and side light guard mesh		●
	Engine side baffle (body)		●
	Remove the crank type spare tire support		●
	Chassis toolbox		●
Applicable Scenarios (Recommend)			Typical scene: city construction foundation pit /sand transportation conditons Typical road: Paved Road, Highway, Minimal Turning Radii Limitation Total weight of vehicle and cargo GVW: ≤55 tons Commonly used speed: Full load 30-60km/h (on road) No-load 40-70km/h (on road) Maximum speed: no typical demand, or ≤110km/h
Note: X-without; ○-Optional; ●-Standard ; The above configuration parameters are for reference. The manufacturer reserves the right to change them without prior notice. The manufacturer reserves right for interpretation.			

Note: X-without; ○-Optional; •-Standard ; The above configuration parameters are for reference. The manufacturer reserves the right to change them without prior notice. The manufacturer reserves right for interpretation.